

1st FLOOR LAYOUT PLAN

DOOR & WINDOW SCHEDULE

MARK	DOOR SIZE (W x H x L)	MAT'L	TYPE	LABEL	NOTES
101	3'-0" x 7'-0"	AL	A	—	1 3/4" SOLID CORE BRICH DOOR - STAINED - 1 HR FIRE RATED @ STAIRWAYS
102	3'-0" x 7'-0"	WD	B	—	1 3/4" SOLID CORE BRICH DOOR - STAINED - 1 HR FIRE RATED @ STAIRWAYS
103	6'-0" x 7'-0"	WD	C	—	1 3/4" SOLID CORE BRICH DOOR - STAINED - W/ 1/4" TEMP GLASS GLAZING 24"x24"
104	6'-0" x 7'-0"	AL	D	—	STORFRONT DOOR AND WINDOW UNIT
105	3'-0" x 7'-0"	W/L	E	—	1 3/4" METAL DOOR AND FRAME - FRAMED & FINISHED - W/ 1/4" TEMP GLASS 12"x36"
106	3'-0" x 7'-0"	AL	F	—	STORFRONT DOOR AND WINDOW UNIT BRONZE COLOR FRAMES, CLEAR E-GLAZE GLASS
W1	3'-0" x 3'-0"	AL	W1	—	1/4" DOUBLE PANEL TEMPERED GLASS WINDOW W/ALUM BRONZE FRAMES
W2	4'-0" x 3'-0"	AL	W2	—	1/4" DOUBLE PANEL TEMPERED GLASS WINDOW W/ALUM BRONZE FRAMES

LEGEND:
 AL ALUMINUM
 W/L WOOD
 WD HOLLOW METAL
 NS FIBERGLASS

DOOR NOTES:
 1. ALL GLASS SHALL BE TEMPERED
 2. EXTERIOR H.W. DOORS TO A/C SPACES SHALL BE INSULATED GLASS IF APPLICABLE
 3. ALL EXTERIOR H.W. DOORS SHALL BE CONFORM TO NFPA REQUIREMENTS
 4. ALL EXIT HARDWARE SHALL CONFORM TO NFPA REQUIREMENTS
 5. ALL STORFRONT (INT AND EXT) DOORS AND WINDOWS FRAMES SHALL MATCH EXIST. BLDG.

FINISH SCHEDULE

ROOM #	ROOM NAME	CEILING	HEIGHT
101	RECEPTION	F2	B3
	FLOOR	CT	W2
	CEILING		

G.C. TO COORDINATE WITH OWNER FOR SELECTION AND COLORS OF ALL FLOOR, WALL, & CEILING TYPES AND FINISHES.

FLOOR:
 VYL = VINYL
 C.T. = CERAMIC TILE
 RFI = RUBBER FLOORING
 VP1 = VINYL PLANK
 CA1 = CARPET
 VYL = VINYL

BASE:
 TILE = TILE (SEE ELEVATIONS)
 NONE = NONE
 ACP = ACOUSTICAL CEILING GRID
 EXP = EXPOSED (PAINT PER OWNER REQ)
 GRD = GRID ONLY - NO TILES PROPOSED
 GB = 1/2" GYPSUM BOARD
 MCB = MOISTURE RESISTANT CEMENT BOARD
 PLW = 3/4" 5 PLY PLYWOOD TO 10' HEIGHT W/ 1/2" GYPSUM BOARD ABOVE TO TOP OF WALLS.

CEILING:
 NONE = NONE
 ACP = ACOUSTICAL CEILING GRID
 EXP = EXPOSED (PAINT PER OWNER REQ)
 GRD = GRID ONLY - NO TILES PROPOSED
 GB = 1/2" GYPSUM BOARD
 MCB = MOISTURE RESISTANT CEMENT BOARD
 PLW = 3/4" 5 PLY PLYWOOD TO 10' HEIGHT W/ 1/2" GYPSUM BOARD ABOVE TO TOP OF WALLS.

WALL:
 NONE = NONE
 ACP = ACOUSTICAL CEILING GRID
 EXP = EXPOSED (PAINT PER OWNER REQ)
 GRD = GRID ONLY - NO TILES PROPOSED
 GB = 1/2" GYPSUM BOARD
 MCB = MOISTURE RESISTANT CEMENT BOARD
 PLW = 3/4" 5 PLY PLYWOOD TO 10' HEIGHT W/ 1/2" GYPSUM BOARD ABOVE TO TOP OF WALLS.

WALL SCHEDULE

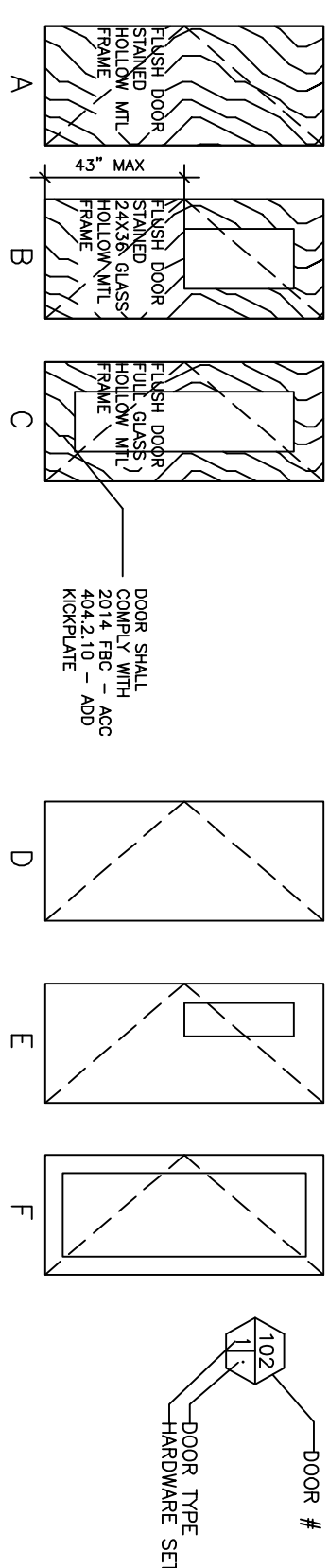
- NEW WALL FRAMING W/GYPSUM BOARD FINISH TO BOTTOM OF FLOOR OR ROOF DECK
- METAL WALL FRAMING W/GYPSUM BOARD FINISH TO 10'-0" HEIGHT OR 6" HIGHER THAN SPECIFIED ADJACENT CEILING. NON-FIRE RATED WALL CONSTRUCTION
- METAL WALL FRAMING W/TYPE X GYPSUM BOARD FROM EXISTING FLOOR TO BOTTOM OF ROOF DECK FOR 1 HOUR RATED WALL ASSEMBLY AS REQUIRED BY CODE
- UL DESIGN U-419
- 8" CMU WALL AT ELEVATOR SHAFT W/STRUCK JOINTS. NO PAINT IN SHAFT FROM PIT TO TOP OF SHAFT. REFER TO DETAILS AT SHEET P-4
- NEW WALL FRAMING W/1/2" GYPSUM BOARD FINISH TO BOTTOM OF FLOOR OR ROOF DECK AT PLUMBING WALLS

HARDWARE SCHEDULE

NO.	HARDWARE	REMARKS
1	PANIC HARDWARE	OFFICES
2	ADA LEVER LOCKSET	ELEVATOR MECH
3	PASSAGE SET	SQL RESTROOMS
4	KEYED DEAD BOLT	UTILITY ROOM
5	BATHROOM LOCKSET	GYMNASIUM
6	STOPS FLOOR WALL	EXTERIOR DOORS
7	CLOSER	STORAGE

NOTE:
 1. FINISH SHALL BE BRUSHED NICKEL
 2. ALL HARDWARE SHALL BE LEVER TYPE AND SHALL MEET THE REQUIREMENTS OF THE 2014 FBC - ACCESSIBILITY CODE
 3. CONTRACTOR TO FAMILIARIZE THEMSELVES WITH THE PROVISIONS OF THE 2014 FBC
 4. NO OPENING SHALL BE ALLOWED ON DOORS WITH PANIC HARDWARE OR OFFICE LOCKS
 5. ANY LOCKSET SHALL BE UNLOCKED WITH A SINGLE OPERATION SUCH AS A PULL OF A LEVER

DOOR TYPES



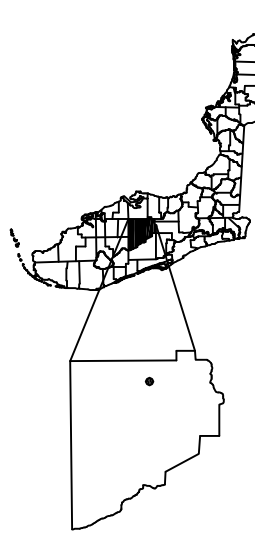
CLIENT:
 AVON PARK LAKES
 BAPTIST CHURCH
 2600 NORTH HIGHLANDS BLVD
 AVON PARK, HIGHLANDS CO., FL
 33825

NO.	REVISION DESCRIPTION	BY	DATE
1	ADDED FLOOR BLOCK OUT AREA FOR STRUCTURAL	NDG	12/20/17
2	REV. STAIR WIDTH PER FBC OCCUPANT LOAD CALCULATIONS FOR 2nd FLOOR AREA	NDG	12/20/17
3	REV. INTERIOR LAYOUT TO FIX CONFLICT WITH METAL BUILDING FRAMING LAYOUT	NDG	1/22/18
4	ADDED KITCHEN EQUIPMENT LAYOUT PER DISCUSSION W/OWNER	NDG	2/7/18
5	PLAN REVISIONS PER COUNTY AND FIRE MARSHALL COMMENTS	NDG	9/26/18
6			
7			
8			
9			
10			
11			
12			
13			

ENGINEER OF RECORD:
 AAA GATOR
 ENGINEERING
 CA # 28430
 PO BOX 1178
 WACHULA, FL 33873

ROY A. BROWN, P.E.
 FLORIDA REGISTRATION #16149
 CIVIL ENGINEERING & BUILDING DESIGN SERVICE

CENTRAL FLORIDA DESIGN



2600 NORTH HIGHLANDS BLVD
AVON PARK, HIGHLANDS CO., FLORIDA

201713

1st FLOOR BUILDING PLAN

P-1

FINISH SCHEDULE

ROOM #	ROOM NAME	FLOOR	CEILING HEIGHT
101	101	8'-0"	
F2 B3			BASE
C1 W2			WALLS

G.C. TO COORDINATE WITH OWNER FOR SELECTION AND COLORS OF ALL FLOOR, WALL, & CEILING TYPES AND FINISHES.

FLOOR

VTL = VINYL
C.T. = CERAMIC TILE
RFI = RUBBER FLOORING
VPI = VINYL PLANK
CA1 = CARPET
VTL = VINYL
TILE = TILE (SEE ELEVATIONS)
NONE = NONE
ACG = ACOUSTICAL CEILING GRID
EXP = EXPOSED (PAINT PER OWNER REQ)
GRID = GRID ONLY - NO TILES PROPOSED
GB - 1/2" Gypsum BOARD
MGB = MOISTURE RESISTANT CEMENT BOARD
PLW = 3/4" 5 PLY PLYWOOD TO 10' HEIGHT W/ 1/2" GYPBOARD ABOVE TO TOP OF WALLS.

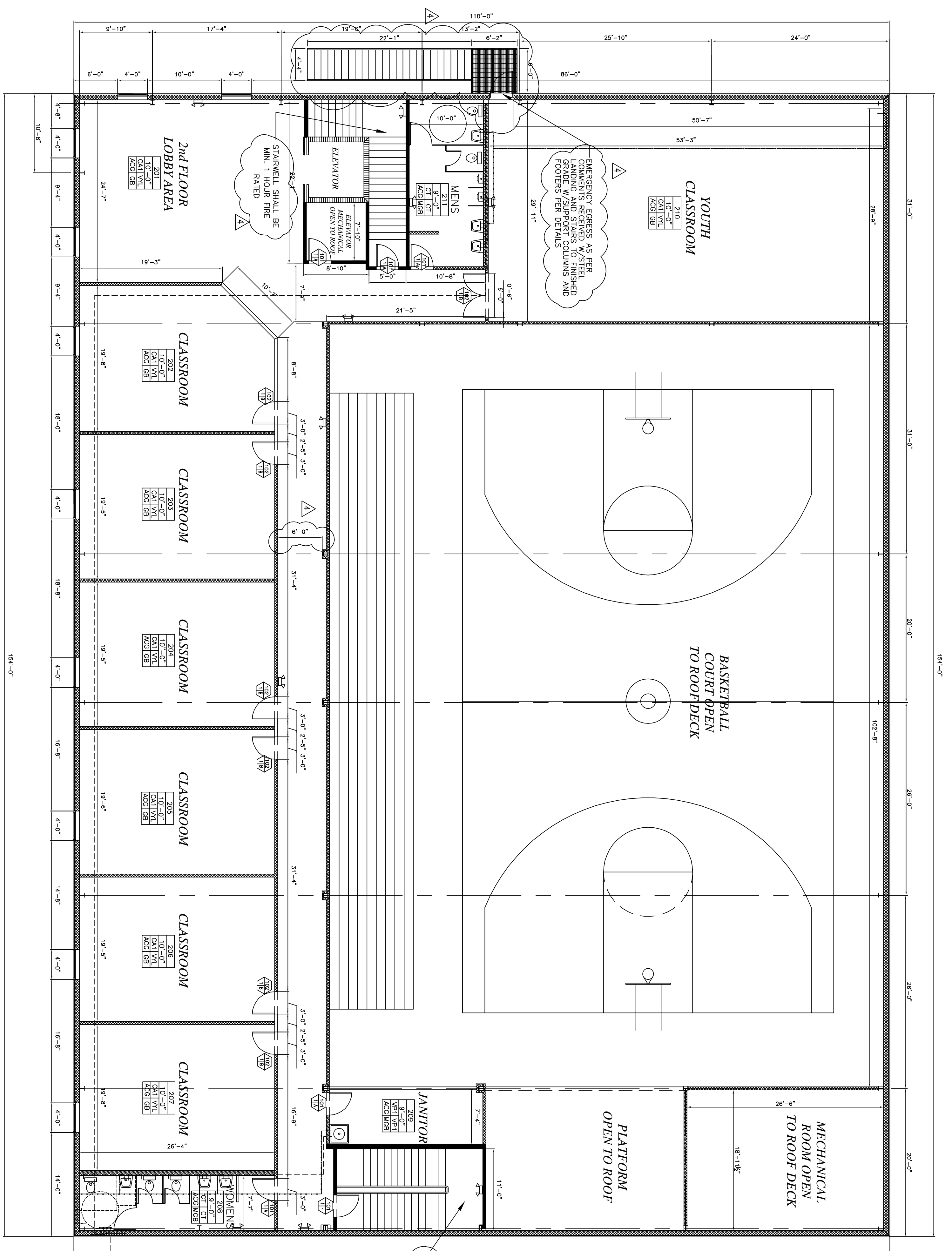
BASE

CEILING

WALL

WALL SCHEDULE

	NEW WALL FRAMING W/ GYPBOARD FINISH TO BOTTOM OF FLOOR OR ROOF DECK W/ 2 HR FIRE RATED WALL CONSTRUCTION
	METAL WALL FRAMING W/ GYPBOARD FINISH TO 10'-0" HEIGHT OR 6" HIGHER THAN SPECIFIED ADJACENT CEILING. NON-FIRE RATED WALL CONSTRUCTION
	METAL WALL FRAMING W/ TYPE X GYPBOARD FROM EXISTING FLOOR TO BOTTOM OF ROOF DECK FOR 1 HOUR RATED WALL ASSEMBLY AS REQUIRED BY CODE UL DESIGN U-419
	8" CMU WALL AT ELEVATOR SHAFT W/ STRUCK JOINTS, NO PAINT IN SHAFT FROM PIT TO TOP OF SHAFT. REFER TO DETAILS AT SHEET P-4
	NEW WALL FRAMING W/ P. GYPBOARD FINISH TO BOTTOM OF FLOOR OR ROOF DECK AT PLUMBING WALLS



DOOR/WINDOW SCHEDULE

MARK	DOOR SIZE (WxHxLT)	MATL	TYPE	LABEL	NOTES
101	3'-0" x 7'-0"	WD	A	B	1 3/4" SOLID CORE BRICH DOOR - STAINED
102	3'-0" x 7'-0"	WD	B	A	1 3/4" SOLID CORE BRICH DOOR - STAINED - W/ 1/4" TEMP GLASS GLAZING, 12"x36"
103	6'-0" x 7'-0"	WD	C	-	1 3/4" SOLID CORE BRICH DOOR - STAINED - W/ 1/4" TEMP GLASS GLAZING, 24"x74"
104	6'-0" x 7'-0"	WD	D	-	1 3/4" METAL DOOR AND WINDOW UNIT - PRIME & PAINTED - W/ 1/4" TEMP GLASS, 12"x36"
105	3'-0" x 7'-0"	WD	E	-	1 3/4" METAL DOOR AND WINDOW UNIT - PRIME & PAINTED - W/ 1/4" TEMP GLASS, 12"x36"
106	3'-0" x 7'-0"	WD	F	-	1 3/4" METAL DOOR AND WINDOW UNIT - PRIME & PAINTED - W/ 1/4" TEMP GLASS, 12"x36"
W1	3'-0" x 7'-0"	W	W1	-	1/4" DOUBLE FRAME TEMPERED GLASS WINDOW W/ ALUMINUM BRONZE FRAMES, E-GLAZE GLASS
W2	4'-0" x 7'-0"	W	W2	-	1/4" DOUBLE FRAME TEMPERED GLASS WINDOW W/ ALUMINUM BRONZE FRAMES

LEGEND:

1. ALL GLASS SHALL BE TEMPERED

2. EXTERIOR H.M. DOORS TO A/C SPACES SHALL BE INSULATED

3. EXTERIOR H.M. DOORS TO A/C SPACES SHALL BE INSULATED

4. EXTERIOR H.M. DOORS TO A/C SPACES SHALL BE INSULATED

5. EXTERIOR H.M. DOORS TO A/C SPACES SHALL BE INSULATED

6. EXTERIOR H.M. DOORS TO A/C SPACES SHALL BE INSULATED

7. EXTERIOR H.M. DOORS TO A/C SPACES SHALL BE INSULATED

8. EXTERIOR H.M. DOORS TO A/C SPACES SHALL BE INSULATED

9. EXTERIOR H.M. DOORS TO A/C SPACES SHALL BE INSULATED

10. EXTERIOR H.M. DOORS TO A/C SPACES SHALL BE INSULATED

11. EXTERIOR H.M. DOORS TO A/C SPACES SHALL BE INSULATED

12. EXTERIOR H.M. DOORS TO A/C SPACES SHALL BE INSULATED

13. EXTERIOR H.M. DOORS TO A/C SPACES SHALL BE INSULATED

14. EXTERIOR H.M. DOORS TO A/C SPACES SHALL BE INSULATED

15. EXTERIOR H.M. DOORS TO A/C SPACES SHALL BE INSULATED

16. EXTERIOR H.M. DOORS TO A/C SPACES SHALL BE INSULATED

17. EXTERIOR H.M. DOORS TO A/C SPACES SHALL BE INSULATED

18. EXTERIOR H.M. DOORS TO A/C SPACES SHALL BE INSULATED

19. EXTERIOR H.M. DOORS TO A/C SPACES SHALL BE INSULATED

20. EXTERIOR H.M. DOORS TO A/C SPACES SHALL BE INSULATED

21. EXTERIOR H.M. DOORS TO A/C SPACES SHALL BE INSULATED

22. EXTERIOR H.M. DOORS TO A/C SPACES SHALL BE INSULATED

23. EXTERIOR H.M. DOORS TO A/C SPACES SHALL BE INSULATED

24. EXTERIOR H.M. DOORS TO A/C SPACES SHALL BE INSULATED

25. EXTERIOR H.M. DOORS TO A/C SPACES SHALL BE INSULATED

26. EXTERIOR H.M. DOORS TO A/C SPACES SHALL BE INSULATED

27. EXTERIOR H.M. DOORS TO A/C SPACES SHALL BE INSULATED

28. EXTERIOR H.M. DOORS TO A/C SPACES SHALL BE INSULATED

29. EXTERIOR H.M. DOORS TO A/C SPACES SHALL BE INSULATED

30. EXTERIOR H.M. DOORS TO A/C SPACES SHALL BE INSULATED

31. EXTERIOR H.M. DOORS TO A/C SPACES SHALL BE INSULATED

32. EXTERIOR H.M. DOORS TO A/C SPACES SHALL BE INSULATED

33. EXTERIOR H.M. DOORS TO A/C SPACES SHALL BE INSULATED

34. EXTERIOR H.M. DOORS TO A/C SPACES SHALL BE INSULATED

35. EXTERIOR H.M. DOORS TO A/C SPACES SHALL BE INSULATED

36. EXTERIOR H.M. DOORS TO A/C SPACES SHALL BE INSULATED

37. EXTERIOR H.M. DOORS TO A/C SPACES SHALL BE INSULATED

38. EXTERIOR H.M. DOORS TO A/C SPACES SHALL BE INSULATED

39. EXTERIOR H.M. DOORS TO A/C SPACES SHALL BE INSULATED

40. EXTERIOR H.M. DOORS TO A/C SPACES SHALL BE INSULATED

41. EXTERIOR H.M. DOORS TO A/C SPACES SHALL BE INSULATED

42. EXTERIOR H.M. DOORS TO A/C SPACES SHALL BE INSULATED

43. EXTERIOR H.M. DOORS TO A/C SPACES SHALL BE INSULATED

44. EXTERIOR H.M. DOORS TO A/C SPACES SHALL BE INSULATED

45. EXTERIOR H.M. DOORS TO A/C SPACES SHALL BE INSULATED

46. EXTERIOR H.M. DOORS TO A/C SPACES SHALL BE INSULATED

47. EXTERIOR H.M. DOORS TO A/C SPACES SHALL BE INSULATED

48. EXTERIOR H.M. DOORS TO A/C SPACES SHALL BE INSULATED

49. EXTERIOR H.M. DOORS TO A/C SPACES SHALL BE INSULATED

50. EXTERIOR H.M. DOORS TO A/C SPACES SHALL BE INSULATED

51. EXTERIOR H.M. DOORS TO A/C SPACES SHALL BE INSULATED

52. EXTERIOR H.M. DOORS TO A/C SPACES SHALL BE INSULATED

53. EXTERIOR H.M. DOORS TO A/C SPACES SHALL BE INSULATED

54. EXTERIOR H.M. DOORS TO A/C SPACES SHALL BE INSULATED

55. EXTERIOR H.M. DOORS TO A/C SPACES SHALL BE INSULATED

56. EXTERIOR H.M. DOORS TO A/C SPACES SHALL BE INSULATED

57. EXTERIOR H.M. DOORS TO A/C SPACES SHALL BE INSULATED

58. EXTERIOR H.M. DOORS TO A/C SPACES SHALL BE INSULATED

59. EXTERIOR H.M. DOORS TO A/C SPACES SHALL BE INSULATED

60. EXTERIOR H.M. DOORS TO A/C SPACES SHALL BE INSULATED

61. EXTERIOR H.M. DOORS TO A/C SPACES SHALL BE INSULATED

62. EXTERIOR H.M. DOORS TO A/C SPACES SHALL BE INSULATED

63. EXTERIOR H.M. DOORS TO A/C SPACES SHALL BE INSULATED

64. EXTERIOR H.M. DOORS TO A/C SPACES SHALL BE INSULATED

65. EXTERIOR H.M. DOORS TO A/C SPACES SHALL BE INSULATED

66. EXTERIOR H.M. DOORS TO A/C SPACES SHALL BE INSULATED

67. EXTERIOR H.M. DOORS TO A/C SPACES SHALL BE INSULATED

68. EXTERIOR H.M. DOORS TO A/C SPACES SHALL BE INSULATED

69. EXTERIOR H.M. DOORS TO A/C SPACES SHALL BE INSULATED

70. EXTERIOR H.M. DOORS TO A/C SPACES SHALL BE INSULATED

71. EXTERIOR H.M. DOORS TO A/C SPACES SHALL BE INSULATED

72. EXTERIOR H.M. DOORS TO A/C SPACES SHALL BE INSULATED

73. EXTERIOR H.M. DOORS TO A/C SPACES SHALL BE INSULATED

74. EXTERIOR H.M. DOORS TO A/C SPACES SHALL BE INSULATED

75. EXTERIOR H.M. DOORS TO A/C SPACES SHALL BE INSULATED

76. EXTERIOR H.M. DOORS TO A/C SPACES SHALL BE INSULATED

77. EXTERIOR H.M. DOORS TO A/C SPACES SHALL BE INSULATED

78. EXTERIOR H.M. DOORS TO A/C SPACES SHALL BE INSULATED

79. EXTERIOR H.M. DOORS TO A/C SPACES SHALL BE INSULATED

80. EXTERIOR H.M. DOORS TO A/C SPACES SHALL BE INSULATED

81. EXTERIOR H.M. DOORS TO A/C SPACES SHALL BE INSULATED

82. EXTERIOR H.M. DOORS TO A/C SPACES SHALL BE INSULATED

83. EXTERIOR H.M. DOORS TO A/C SPACES SHALL BE INSULATED

84. EXTERIOR H.M. DOORS TO A/C SPACES SHALL BE INSULATED

85. EXTERIOR H.M. DOORS TO A/C SPACES SHALL BE INSULATED

86. EXTERIOR H.M. DOORS TO A/C SPACES SHALL BE INSULATED

87. EXTERIOR H.M. DOORS TO A/C SPACES SHALL BE INSULATED

88. EXTERIOR H.M. DOORS TO A/C SPACES SHALL BE INSULATED

89. EXTERIOR H.M. DOORS TO A/C SPACES SHALL BE INSULATED

90. EXTERIOR H.M. DOORS TO A/C SPACES SHALL BE INSULATED

91. EXTERIOR H.M. DOORS TO A/C SPACES SHALL BE INSULATED

92. EXTERIOR H.M. DOORS TO A/C SPACES SHALL BE INSULATED

93. EXTERIOR H.M. DOORS TO A/C SPACES SHALL BE INSULATED

94. EXTERIOR H.M. DOORS TO A/C SPACES SHALL BE INSULATED

95. EXTERIOR H.M. DOORS TO A/C SPACES SHALL BE INSULATED

96. EXTERIOR H.M. DOORS TO A/C SPACES SHALL BE INSULATED

97. EXTERIOR H.M. DOORS TO A/C SPACES SHALL BE INSULATED

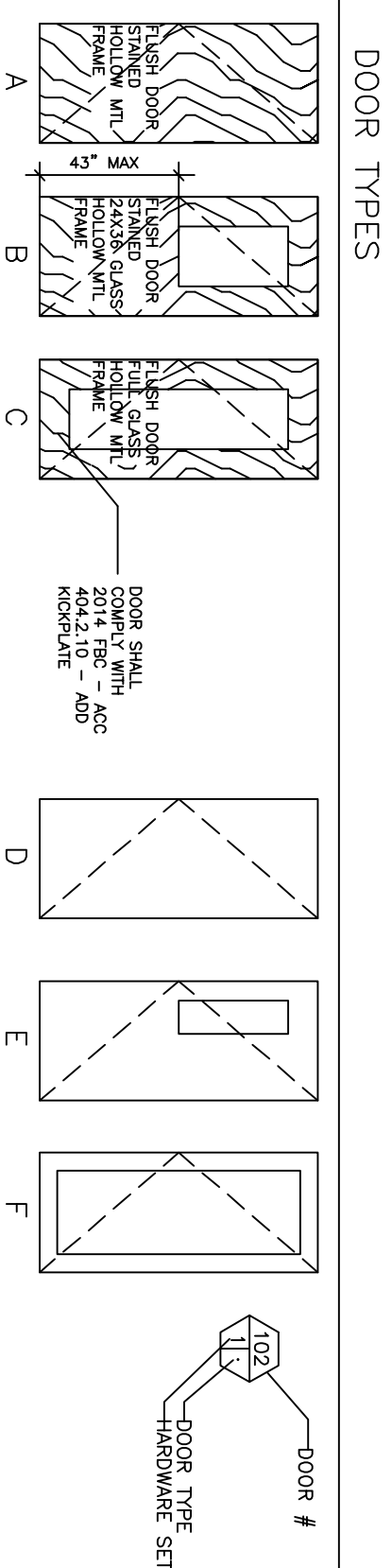
98. EXTERIOR H.M. DOORS TO A/C SPACES SHALL BE INSULATED

99. EXTERIOR H.M. DOORS TO A/C SPACES SHALL BE INSULATED

100. EXTERIOR H.M. DOORS TO A/C SPACES SHALL BE INSULATED

HARDWARE SCHEDULE

MARK	DOOR SIZE (WxHxLT)	MATL	TYPE	LABEL	NOTES
1	3'-0" x 7'-0"	WD	A	B	1 3/4" SOLID CORE BRICH DOOR - STAINED
2	3'-0" x 7'-0"	WD	B	A	1 3/4" SOLID CORE BRICH DOOR - STAINED - W/ 1/4" TEMP GLASS GLAZING, 12"x36"
3	6'-0" x 7'-0"	WD	C	-	1 3/4" SOLID CORE BRICH DOOR - STAINED - W/ 1/4" TEMP GLASS GLAZING, 24"x74"
4	6'-0" x 7'-0"	WD	D	-	1 3/4" METAL DOOR AND WINDOW UNIT - PRIME & PAINTED - W/ 1/4" TEMP GLASS, 12"x36"
5	3'-0" x 7'-0"	WD	E	-	1 3/4" METAL DOOR AND WINDOW UNIT - PRIME & PAINTED - W/ 1/4" TEMP GLASS, 12"x36"
6	3'-0" x 7'-0"	WD	F	-	1 3/4" METAL DOOR AND WINDOW UNIT - PRIME & PAINTED - W/ 1/4" TEMP GLASS, 12"x36"
7	3'-0" x 7'-0"	WD	F	-	1 3/4" METAL DOOR AND WINDOW UNIT - PRIME & PAINTED - W/ 1/4" TEMP GLASS, 12"x36"



CLIENT:
AVON PARK LAKES
BAPTIST CHURCH
2600 NORTH HIGHLANDS BLVD
AVON PARK, HIGHLANDS CO., FL
33825

NO.	REVISION DESCRIPTION	BY	DATE
1	ADDED FLOOR BLOCK OUT AREA FOR STRUCTURAL	NDG	12/20/17
2	REV. STAIR WIDTH PER FBC OCCUPANT LOAD CALCULATIONS FOR 2ND FLOOR AREA	NDG	12/20/17
3	REV. INTERIOR LAYOUT TO FIX CONFLICT WITH METAL BUILDING FRAMING LAYOUT	NDG	1/22/18
4	ADDED EGRESS DOOR AND STAIRS PER COMMENTS, MISC. BLDG REVISIONS PER COMM.	NDG	9/26/18
5			
6			
7			
8			
9			
10			
11			
12			
13			

AAA GATOR ENGINEERING
CA# 28430
PO BOX 1178
WACHULA, FL 33873

2600 NORTH HIGHLANDS BLVD
AVON PARK, HIGHLANDS CO., FLORIDA
201713

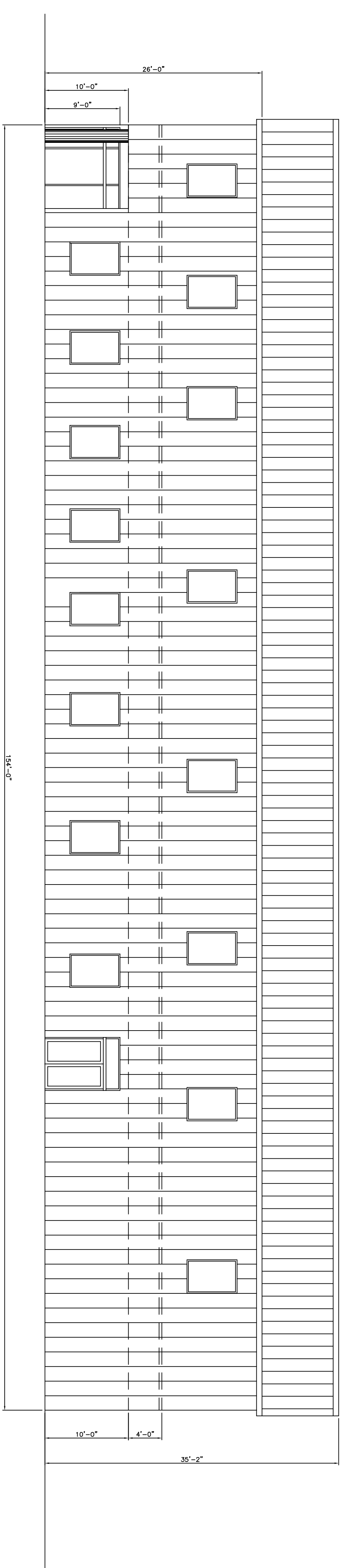
SCALE: AS NOTED
DATE: 7/28/17
DESIGNED BY: RING
DRAWN BY: RING
CHECKED BY: RAB

ROY A. BROWN, P.E.
FLORIDA REGISTRATION #116149
2600 NORTH HIGHLANDS BLVD
AVON PARK, HIGHLANDS CO., FLORIDA
201713

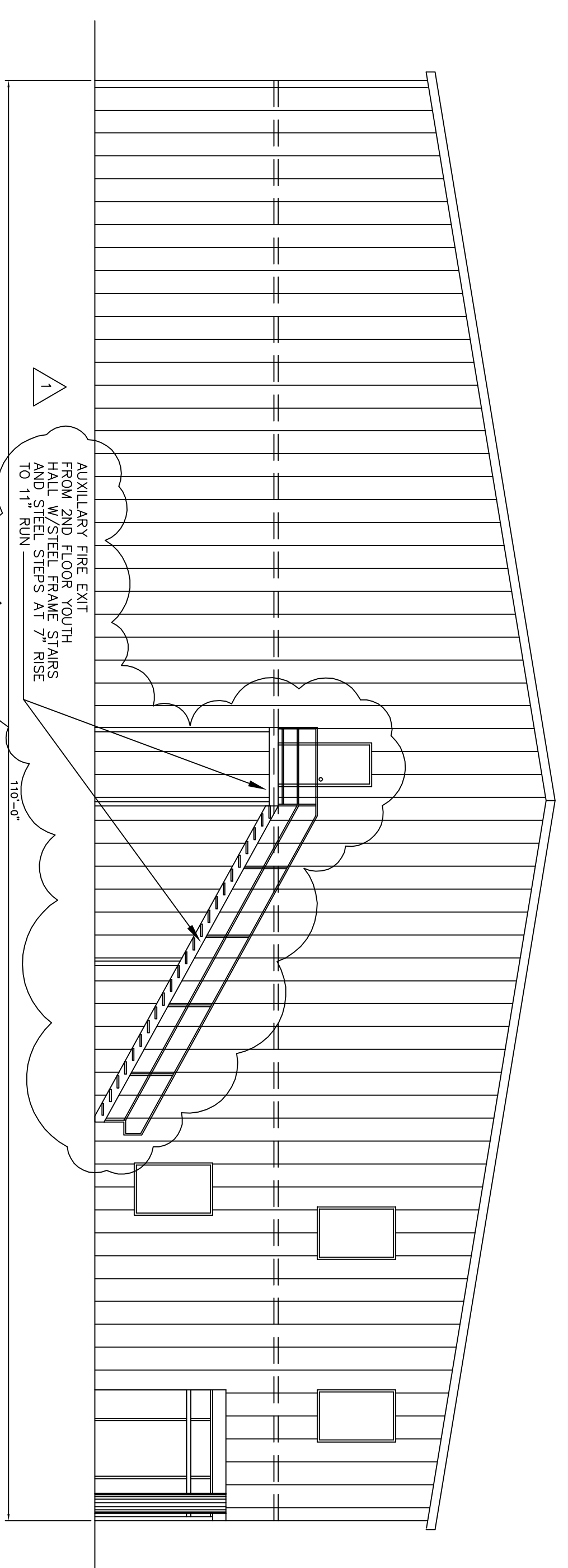
2nd FLOOR BUILDING PLAN
P-2

CLIENT:
**AVON PARK LAKES
 BAPTIST CHURCH**
 2600 NORTH HIGHLANDS BLVD
 AVON PARK, HIGHLANDS CO., FL
 33825

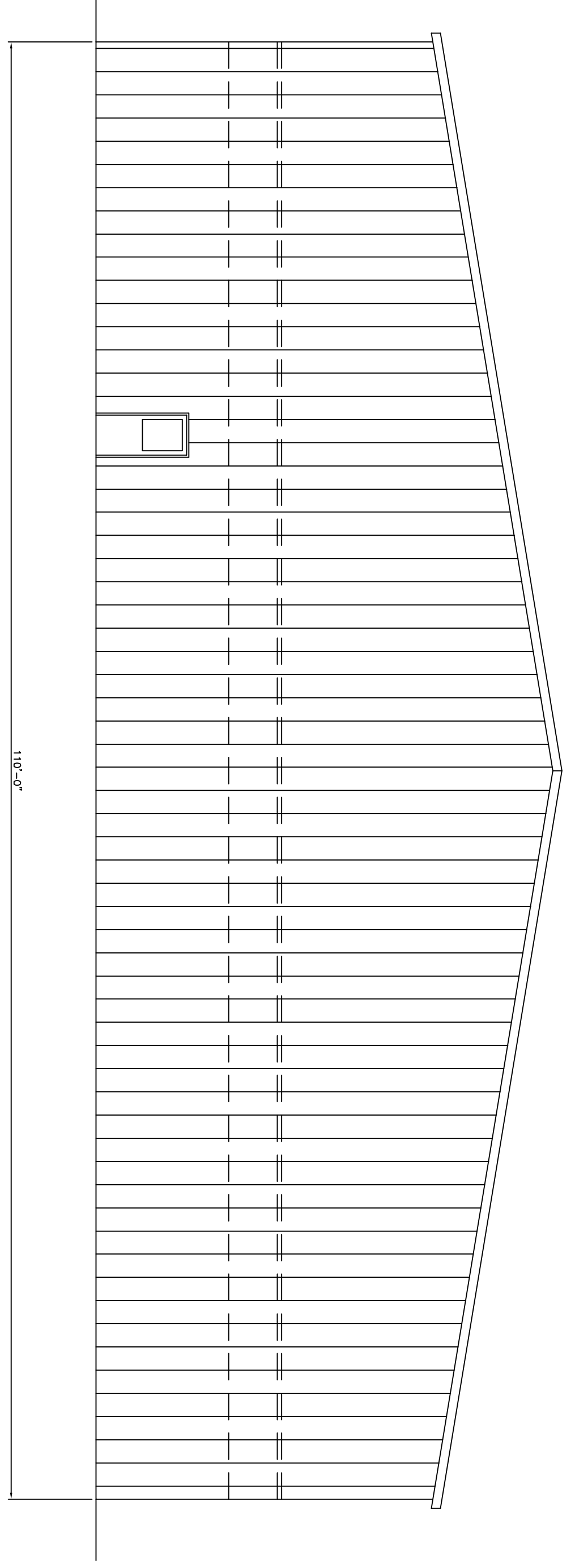
NO.	REVISION DESCRIPTION	BY	DATE
1	ADDED YOUTH HALL FIRE EXIT AND STAIRS PER COMMENTS RECEIVED		9/28/18
2			
3			
4			
5			
6			
7			
8			
9			
10			
11			
12			
13			



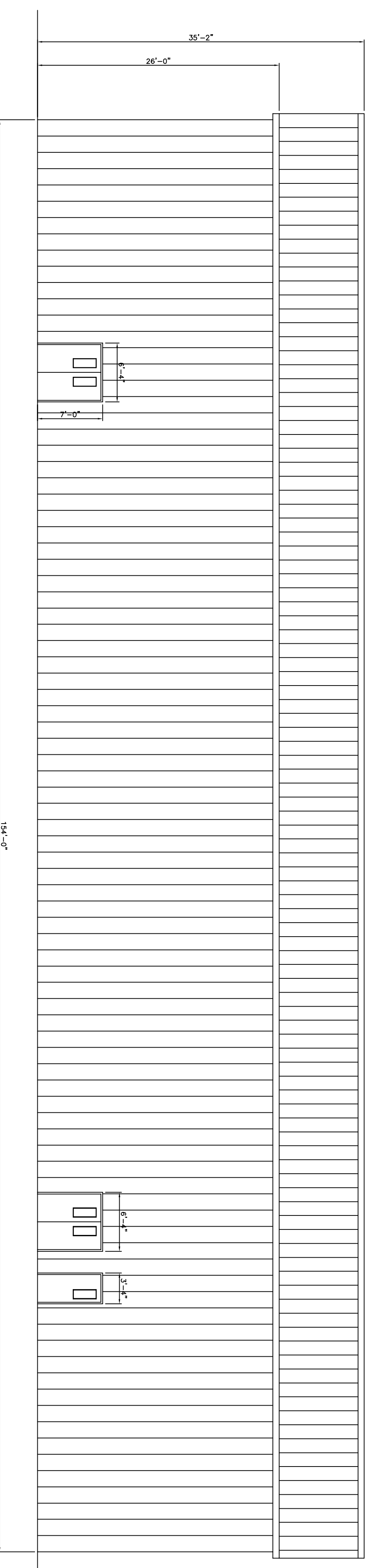
FRONT ELEVATION



LEFT END ELEVATION



RIGHT END ELEVATION



REAR ELEVATION

CENTRAL FLORIDA DESIGN

1100 HUNTERS PARK, TAMPA, FL 33613
 PHONE: (813) 844-8888 FAX: 813-844-7551 CELL: 813-398-5248
 13415 CENTRAL FLORIDA DESIGN CENTER, AVON PARK, FL 33825
 6715 ENGLISHMAN'S BUILDING DESIGN SERVICE

**AAA GATOR
 ENGINEERING**
 CA# 28430
 PO BOX 1178
 WACHULA, FL 33873

ROY A. BROWN, P.E.
 FLORIDA REGISTRATION #11649
 DRAWING AND SEAL NUMBER 201713
 SITE ADDRESS:
**2600 NORTH HIGHLANDS BLVD
 AVON PARK, HIGHLANDS CO., FLORIDA**
 CDD JOB NUMBER:
201713

SCALE: AS NOTED
 DATE: 7/28/17 PLOT DATE: 9/28/18
 DESIGNED BY: RH
 DRAWN BY: NDC
 CHECKED BY: RAB
 DRAWING TITLE:
**PROPOSED
 ELEVATIONS**

SHEET NO.
P-3